

**EUROCUTTER®**  
*different, but better*



*see the difference, take the better*

**SP3**

*Cutting*



# EUROCUTTER® SP3

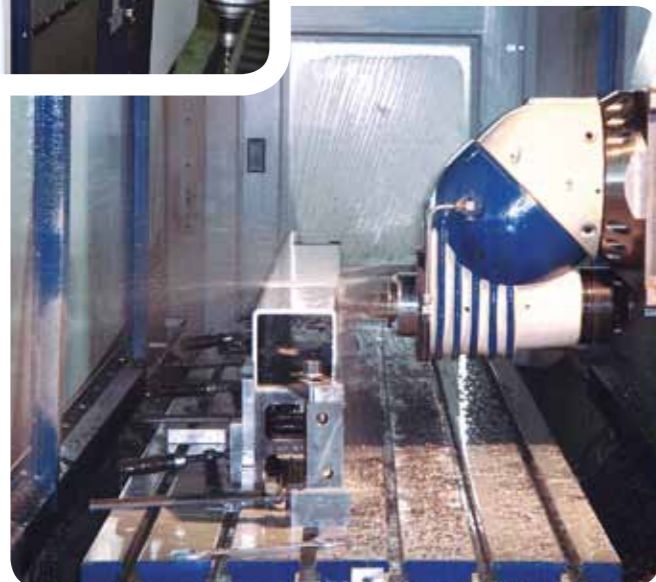
The new guillotine generation – different, but better

**EUROCUTTER®** sets new standards for guillotines in view of the cutting process.

The new **EUROCUTTER®** SP3 guillotine-series complies with maximum standards; as single-machine or in the centre of an automated cutting line.

The **EUROCUTTER®** standard equipment leaves nothing to be desired, as almost everything is standard.

With high vertical integration and the purchase of necessary and approved components of world-wide known leaders of technology, the **EUROCUTTER®** SP3 guillotine sets new standards in quality.



# EUROCUTTER® SP3

The new series stands for:

## Sturdy, powerful and long-lived

due to tight and buckling resistant machine frame and the use of precision units for back gauge positioning, knife drive and guidances.

## Efficient and economic

due to high clamp opening, rapid back gauge speed as well as easy and fast knife change.

## High precision

due to a mutual linear back gauge guidance and precision ball screw for back gauge positioning.

## Highest safety

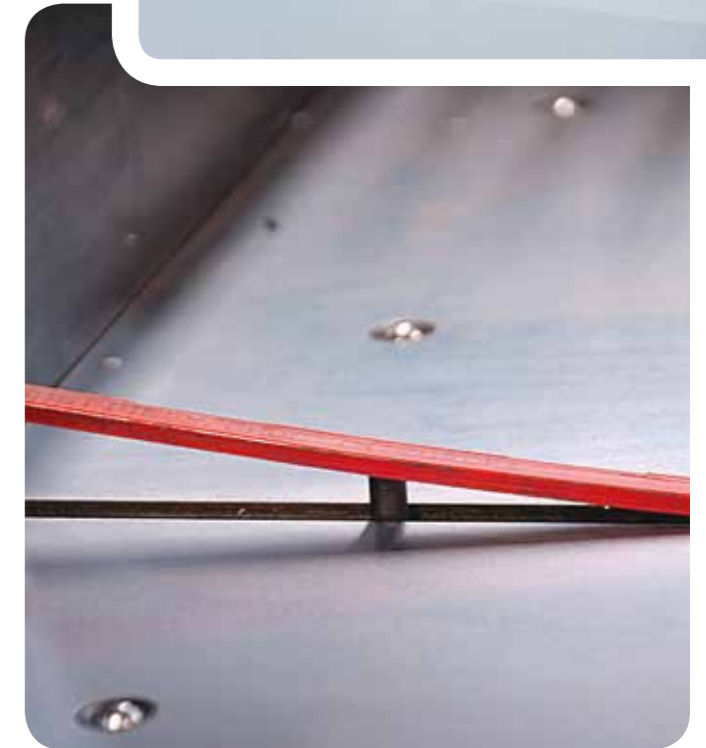
**EUROCUTTER®** SP3 guillotines are constructed according to the CE – machine building regulations and guarantee highest safety.

## Easy to use

modern, clearly arranged operator panel, data input via pointer dot keyboard respectively Touch Screen Monitor (TM and TSM). The XLM type is equipped with a 18.5" Full-Touch Screen Monitor in format 16:9. Symbols are consistent, uncomplicated and self-explanatory. Including format-programming and cutting bar ejector.

## Individuality

A comprehensive range of products with 5 cutting widths from 800 to 1760 mm and 5 different control versions, offer the right product for each customer.



# EUROCUTTER® SP3

Everything is standard – unbelievable, but true!

- 1 The boosted and buckling resistant machine frame avoids vibrations and increases the cutting accuracy to the maximum.
- 2 Approved and powerful knife drive technology via worm gear and hydraulic clutch.
- 3 Standard cast iron machine with main and side tables hard chromium plated. All tables equipped with air nozzles. Extra large side tables in format 1000 x 750 mm, standard as of cutting width 1150 mm.
- 4 Rapid, safe and uncomplicated knife change from the front. Short set-up times and maximum knife life time due to lifting technique and adjustment gauge.
- 5 Cutting bar ejector standard, located under the table.
- 6 Remote-control remote monitoring (preparation).
- 7 Clearly arranged: the monitor, the operator panel with pointer dot keyboard as well as the balance wheel for back gauge fine adjustment, everything is positioned at eye level.
- 8 Large 18.5" Full-Touch Screen Monitor for XLM version.
- 9 Work organization: Order sheet holder and extendable drawer below the side tables.

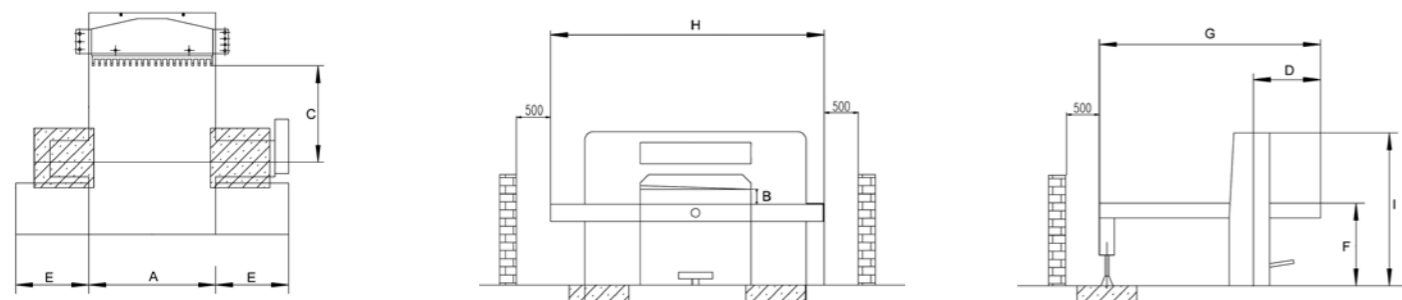
- 10 Safety is maximized. Standard safety package including 25-channel self-controlling light beam barriers, completely closed and electrically controlled rear table, clamp protection device, two-hand cut release with inhibition of repetitive cutting; pushing block.
- 11 Back gauge guidance by mutual linear guidance, therefore no slit in the cutting table.
- 12 Precision ball screw with servo drive, automatic speed regulation by back gauge speed control.
- 13 Complete rear table cover, as standard, electrically secured, fast opening for knife backside cleaning.



# EUROCUTTER® SP3

Everything is standard – unbelievable, but true!

EUROCUTTER®		800	920	1150	1370	1760
A Cutting width	mm	800	920	1150	1370	1760
	inch	31.5	36.2	45.3	54.0	69.3
B Clamp opening	mm	130	130	165	165	165
	inch	5.1	5.1	6.5	6.5	6.5
C Rear table length	mm	800	920	1150	1450	2000
	inch	31.5	36.2	45.3	57.1	78.7
D Front table length	mm	690	690	735	735	750
	inch	27.2	27.2	29.0	29.0	29.5
E Side tables	mm	600 x 485	600 x 485	1000 x 750	1000 x 750	1000 x 750
	inch	23.6 x 19.1	23.6 x 19.1	39.4 x 29.5	39.4 x 29.5	39.4 x 29.5
F Table height	mm	900	900	900	900	900
	inch	35.4	35.4	35.4	35.4	35.4
G Machine length with side tables	mm	1960	2082	2575	2916	3640
	inch	77	82	101	115	143
H Machine width with side tables	mm	2110	2228	3150	3370	3760
	inch	83	88	124	133	148
I Machine height	mm	1615	1615	1680	1680	1750
	inch	64	64	66	66	69
Continuous knife cycle rate	r/min	45	45	45	45	45
Hydraulic pressure	kN	1,5–30	1,5–35	1,5–45	1,5–55	1,5–70
Minimum cut without false clamp	mm	20	22	25	25	30
	inch	0.8	0.85	1	1	1.2
Minimum cut with false clamp	mm	55	80	80	80	90
	inch	2.1	3.1	3.1	3.1	3.5
Power consumption	kW	3,0	3,0	4,0	4,0	7,5
	HP	4,0	4,0	5,5	5,5	10,0
Weight net	Kg	2200	2365	3500	4500	6800
	lbs	4850	5214	7716	9921	14991



## Extensive standard equipment – nothing is left to be desired

- One-piece machine frame cast iron
- All tables made of cast iron, chromium plated
- Air nozzles in all tables
- Air tables equipped with fan
- Overhead back gauge drive, mutual linear and ball screw
- Closed cutting table without gap
- Turn/swivel back gauge manually adjustable
- Hydraulic clutch
- Hydraulic clamping infinitely adjustable
- Variable adjustable clamp pressure
- Rear table cover with 2 movable segments, electrically secured
- 25 channel self-regulating safety light guards
- Mechanical overflow protection (safety latch)
- Safety bolts for overload protection device
- Two-hand cut release with inhibition and repetitive cutting
- Clamp protection
- Protection switches for all drive motors
- Electric knife time delay control
- Emergency stop switch
- Lockable main switch
- Side lays, chromium plated
- Working table light
- Outline indicator, mechanical
- Outline indicator, optical
- Graphic illustration of processes (Monitor models)
- Remote control – remote monitoring (preparation)
- Knife changing device incl. lifting system and adjust gauge
- False clamp cover
- Order sheet holder
- Drawer below side tables
- 2 HSS knives
- 10 cutting sticks
- Pushing block
- Operation manual, spare parts catalogue, electric diagram
- Wear and tear part set
- Tool box
- 3-phases 200/400 V / 50/60 Hz
- CE certification\*

\*safety features might differ for countries without CE regulations

Technical details subject to change.

## Options

- Retractable side lay
- Automatic waste removal TrimCut
- Automatic waste transport system TrimMove
- EURO CUT office software
- Frequency controlled main motor to reduce knife speed
- JDF converting software (CIP4)
- Folding tables
- Carbide-tipped knives
- Clamp cover in special sizes, flexible
- Programmable pressure adjustment
- Cut optimization

- Side tables in special sizes
- Separate air supply front table
- Stronger blowers

All solo high speed guillotines can be extended to cutting lines, using our peripheral equipment for applications such as loading, jogging, transport, buffering or unloading.

Please look at [www.eurocutter.de](http://www.eurocutter.de) to see our complete product line.

## 23 different models – a suitable control for each user



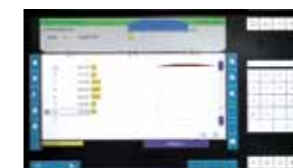
### EUROCUTTER® M / TM SP3

Programmable software-control equipped with all available functions, 10.4" color-display. TM-version equipped with Touch Screen Monitor, available for all cutting sizes.



### EUROCUTTER® SM / TSM SP3

Programmable software-control equipped with all available functions; 15" color-display. TSM type with Touch Screen Monitor, available for all cutting sizes.



### EUROCUTTER® XLM SP3

The programmable top model with 18.5" Full-Touch Screen Monitor, available for cutting widths 1150 to 1760 mm.

All available functions and software-controls under: [www.eurocutter.de](http://www.eurocutter.de)

## EUROCUTTER® AD

### Best choice for very large formats

- Cutting widths from 1850 to 4000 mm
- Double pull-arm system

More information under [www.eurocutter.de](http://www.eurocutter.de)





## **Rich. Ebbesen ApS**

Hassellunden 16  
2765 Smørum  
Danmark

T.: +45 3617 3363

E.: [info@rich-ebbesen.dk](mailto:info@rich-ebbesen.dk)